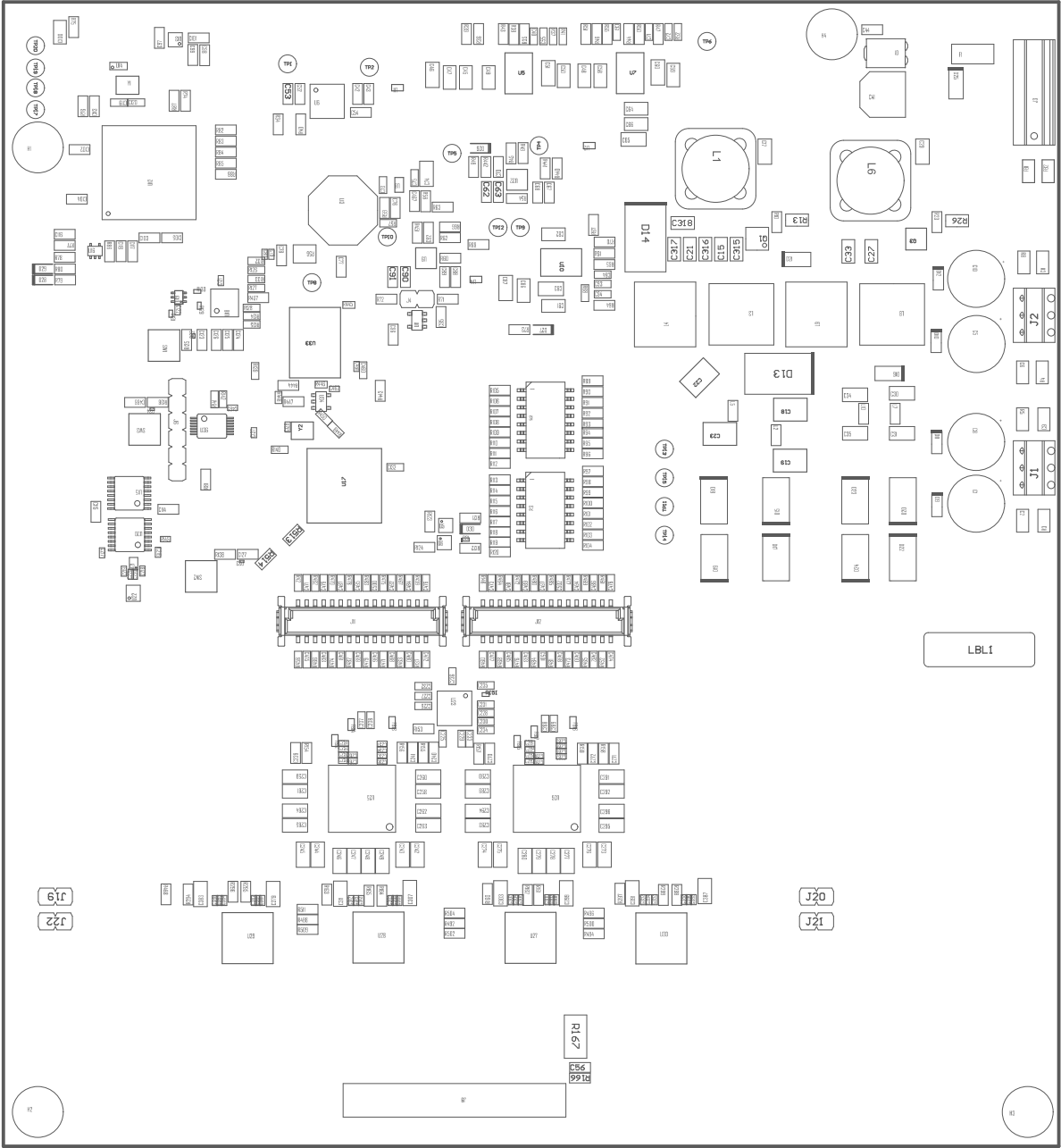


ZZ1 ■Install label in silkscreened box after final wash. Text shall be 8 pt font. Text shall be per the Label Table in the PDF schematic.  
ZZ2 ■These assemblies are ESD sensitive, ESD precautions shall be observed.  
ZZ3 ■These assemblies must be clean and free from flux and all contaminants. Use of no clean flux is not acceptable.  
ZZ4 ■These assemblies must comply with workmanship standards IPC-A-610 Class 2, unless otherwise specified.



COMPONENTS MARKED 'DNP' SHOULD NOT BE POPULATED.  
ASSEMBLY VARIANT: DNP test headers

PCB VIEWED FROM TOP SIDE	BOARD #: TIDA-010256	REV: E1	SUN REV: Not in version control
	TID #:	TIDA-010256	
PLOT NAME = Top Assembly Drawing	GENERATED : 3/3/2025 4:18:49 PM	TEXAS INSTRUMENTS	



02

0450